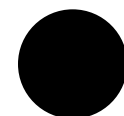
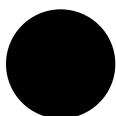
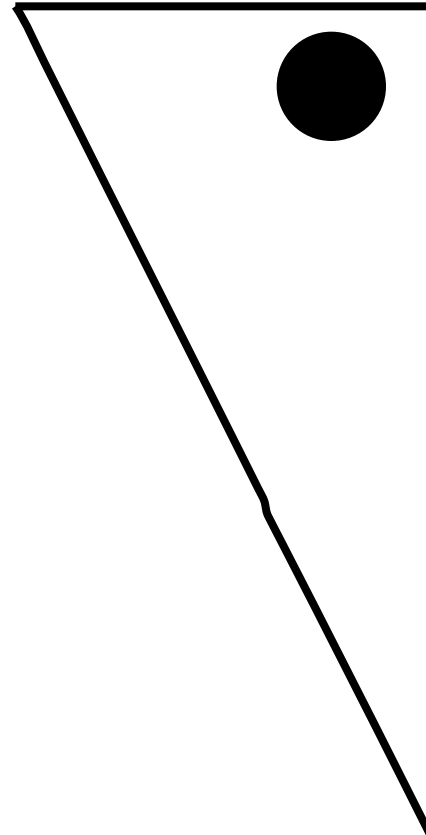


Test
Square
1"x1"

Handles
Cut 2 Fabric
Cut 2 Interfacing



Heather Handmade



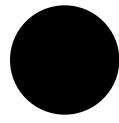
Bag
Cut 2 Fabric
Cut 2 Lining
Cut 2 Interfacing



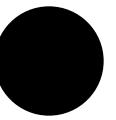
Heather Handmade

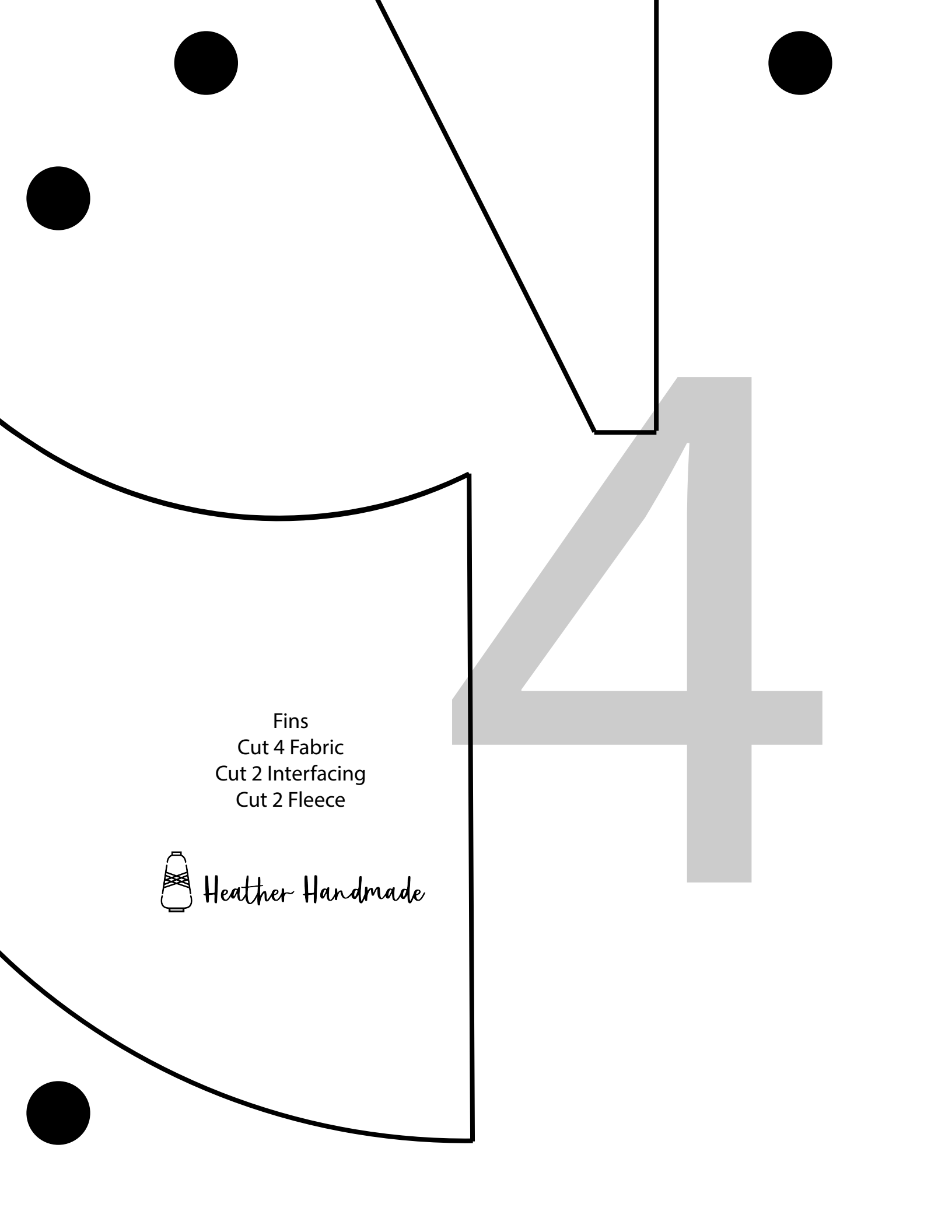
Fold





33





Fins
Cut 4 Fabric
Cut 2 Interfacing
Cut 2 Fleece



Heather Handmade